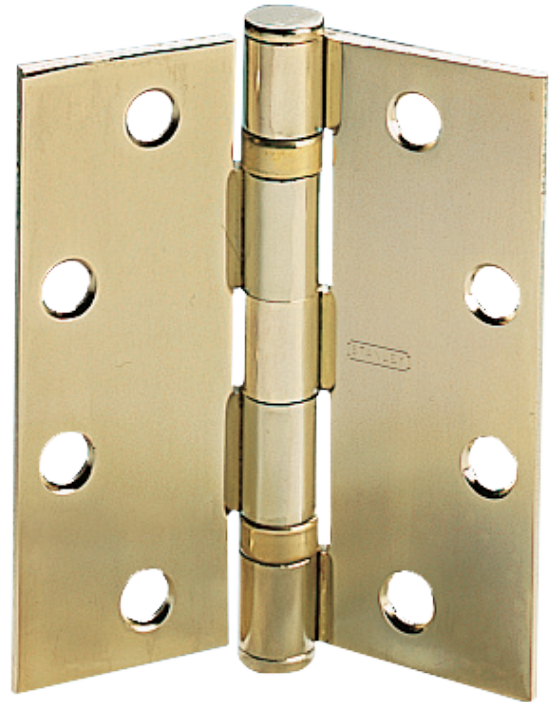
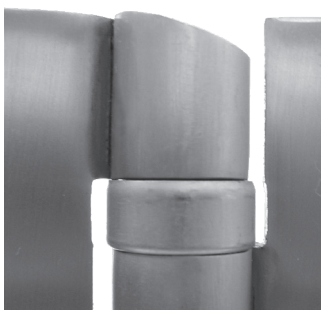


### FBB SERIES HINGES



### FBB SERIES HINGE TIP OPTIONS



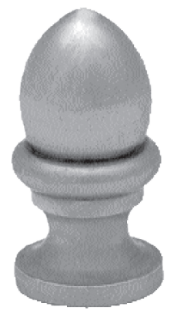
Hospital Tip



Steeple Tip



Ball Tip



Crown Tip

**Q: What are STANLEY FBB Series hinges?**

A: FBB hinges are ball bearing hinges that conform to ANSI A156.1. The vertical load of the door is supported by tough-hardened chrome alloy, vertical thrust ball bearing assemblies. The lateral load of the door is supported by the pin bearing on the inside of the hinge knuckles. FBB hinges are approved for use on fire-rated doors since they contain anti-friction bearings, a requirement for fire-rated and self-closing doors.

**Q: What hinge types are the FBB Series offered in?**

A: FBB hinges are available in full mortise, half mortise, full surface and half surface. In addition, heavy weight and standard weight versions are available.

**Q: What differentiates the FBB heavy weight hinges from the FBB standard weight hinges?**

A: FBB heavy weight hinges are equipped with four ball bearings whereas the FBB standard weight hinges are equipped with two. Heavy weight bearing assemblies employ an anti-friction sleeve that provides positive lateral support not found in standard weight assemblies. Heavy weight options are also manufactured using a thicker gauge metal.

**Q: What knuckle designs are FBB hinges offered in?**

A: FBB hinges are only available in a 5 knuckle design.

**Q: What is the common FBB hinge application?**

A: The FBB Series consists of standard commercial grade door hinges. This makes them an ideal fit for wood and metal doors, medium to heavy weight doors and medium to high frequency usage applications. In addition, ferrous and non-ferrous hinges are available. Ferrous hinges are a good fit for interior applications whereas non-ferrous hinges are ideal for exterior or corrosive environments.

**Q: What hinge tips are offered for the FBB Series?**

A: FBB hinges can be ordered with decorative tips (i.e., ball, crown, steeple) or specialty tips (i.e., hospital, institutional).

**Q: What hinge options are available for the FBB Series?**

A: Many made-to-order hinge options are available including: NRP (Non-Removable Pins), security stud, shear-resistant stud, special swage, raised barrel, radius corner, concealed electric, concealed switch, wide throw, slip-in applications, pivot-reinforced, rust-resistant base and swing clear designs.

**Q: Are there electrical options available to order on FBB hinges?**

A: FBB hinges are offered in 4-wire, 6-wire and 8-wire as stock options. 10-wire and extra long wire are available as made-to-order options.

**Q: How many hinges are required per door installation?**

A: For both standard and fire-rated doors, two hinges are required on doors up to 5' and an additional hinge is required for each additional 2.5'.

**Q: What screws are included with FBB hinge orders?**

A: Both machine and wood screws are included in FBB hinge orders to allow for easy installation on either wood or metal doors and door frames.

**Q: Do you have to specify handing when ordering FBB hinges?**

A: FBB hinges are non-handed, so they can be used on both RH and LH doors.

**Q: What finishes are offered for FBB hinges?**

A: FBB hinges are available in 30+ finishes allowing for cohesion with other door hardware finishes.

**Q: What is the lead time for FBB hinges?**

A: The average lead time for stock FBB hinges is 48 hours from order receipt. The average lead time for made-to-order hinges of quantities up to 200 units is approximately 3 weeks. Please consult the factory for made-to-order requests in quantities larger than 200 units for respective lead times.

**Q: What warranty do FBB hinges have?**

A: FBB hinges have a limited lifetime mechanical warranty for the life of the building. They have a 1 year electrical warranty for concealed electric or concealed switch options.